



Empowerment for sustainable development

Students Guidebook



© 2020

University

Statements

MISSION

To generate, disseminate and apply knowledge while sustaining excellence in teaching, learning and research

VISION

A world class University in socio-economic and technological advancements

PHILOSOPHY STATEMENT

Pwani University will strive to be dynamic, responsive and provide quality education, training, research, outreach and opportunities for innovation for the advancement of the individual and society. The University is committed to invest its infrastructure and human resources so as to enhance the discovery, transmission, preservation and enhancement of knowledge and to stimulate the intellectual growth and participation of students in the economic, social, cultural, scientific and technological development of Kenya. The University will offer and disseminate knowledge in all disciplines relevant to the daily life of Kenyans for the purpose of enlightening and enabling students and others to improve their standards of living, provide for intellectual advancement and uplift their spiritual and moral status.

MOTTO

Shajihisho la maendeleo endelevu
(*Empowerment for sustainable development*)

Contents

Message from the Vice-chancellor

Brief About Pwani University

Our History

1. Arriving at Pwani University for the First Time
2. Office of the Dean of Students Affairs
3. Finance Matters
4. Transport
5. Health and Medical Matters
6. Career Guidance and Counselling Services
7. Mails and Communication
8. Clubs and Societies
9. General Code of Conduct
10. Computer, ICT and Internet Use
11. Pwani University Students Association (PUSA)
12. Security

Message from the Vice-Chancellor

It is my pleasure to welcome all new students to Pwani University and convey the delight of the Pwani University community to you for having made a very important decision to join Pwani University. We are grateful for that gesture and we have been looking forward to your coming. Certainly, we have taken time to prepare for you as you begin your studies. Like previous years, we are circulating the Pwani University Students Handbook, an annual publication of the University meant to assist you to settle in. The Handbook is a compilation of guidelines governing student's matters in addition to other general issues, which you will definitely find useful.

The Handbook has evolved over the years with new information included each year. The current version is more updated and provides vital excerpts from key University policy documents. In addition, it provides some vital information on control and prevention of COVID-19. It's important that all of us adhere to the efforts of fighting the pandemic in Kenya and the world at large. That way you will make your stay at Pwani University more enjoyable and academically rewarding. Due to the aforementioned challenges of COVID-19, you will realise that some

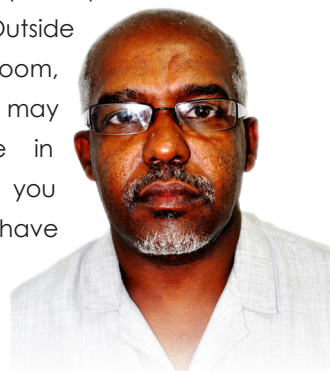
adjustments in the modes of teaching and content delivery. I strongly urge all students to take all necessary actions to prepare to adapt to this "new normal" way of teaching and learning. If for any reason there are issues, which you find confusing in this new situation, or you cannot understand please do not hesitate to visit the Dean of Students office for assistance.

The Handbook informs you on some of the standards that you need to know about your conduct within the University. It sets forth the academic and disciplinary rules and regulations that apply to everyone in our community.

Note that you have entered a period of tremendous growth and change in your life! At Pwani you will form lasting friendships, discover new interests and take great steps towards becoming the person you hope

to be. Outside the classroom, you may participate in activities you may not have tried or imagined before.

Indeed, one of the



Prof. Mohamed .S Rajab EBS PhD

most important of all new things in-wait for you is the interaction with new and interesting cultural activities, which are very different from what you are used to. My advice is that you should ask for guidance whenever in doubt.

Pwani University community is truly diverse, we are proud of this and it is part of our strength. Remember that at Pwani, we will always be there to listen and assist you. Our help is meant to guide you make your own choices both academic and otherwise.

All of us expect you to thrive socially

and academically in so doing realize your personal dreams. Your lecturers are looking forward to engage you in academic discussion and knowledge exchange in both formal and informal meetings. Please feel free to interact with them to broaden your knowledge on issues concerning your career.

Once again, please feel welcome to Pwani University

**Prof. Mohamed S. Rajab, EBS, PhD,
Vice-Chancellor,
Pwani University**

Brief about Pwani University

Pwani University was first established as a constituent college of Kenyatta University on 23rd August, 2007 through a Presidential order. The order elevated the former Kilifi Institute of Agriculture to a University College. It received its first cohort of 200 students on the 29th October, 2007 and on 2nd November, 2007, the then President, His Excellency Mwai Kibaki, officially opened the College.

On the 31st January, 2013, Pwani University was awarded its charter and became a full-fledged university. At the time of elevation, the institution had about 4,000 students taking various programs. The University occupies a land area of about 600 acres.

The first graduation ceremony was held in 2010 for the group of students admitted to pursue various diploma and certificate courses. The first cohort admitted in the university in 2007, graduated in December 2011. Pwani University graduated its first master's degree student in 2014 and in 3rd graduation, 2015 had its first PhD student graduate.

The Structure of the University

The University has three (3) major divisions headed by Deputy Vice Chancellors. These are:

- Academic and Students Affairs
- Administration, Finance and Planning

- Research and Extension

The Academic and Students Affairs division regulates academic matters in the schools and their departments or sections.

The schools are headed by Deans and departments or section headed by Chair persons. Currently there are seven schools as shown:

- i) School of Agricultural Sciences and Agribusiness (SASA)
- ii) School of Business and Economics, (SBE)
- iii) School of Earth and Environmental Sciences (SEES)
- iv) School of Education, (SED)
- v) School of Human and Health Sciences (SHHS)
- vi) School of Humanities and Social Sciences, (SHSS)
- vii) School of Pure and Applied Sciences, (SPAS)

The schools run the university academic programmes ranging from Certificate to PhDs. To support the schools, manage the programmes are two (2) directorates and school of graduate studies:

- (i) Board of Undergraduate studies, (BUS)
- (ii) Directorate of Vocational Educational Training, (TVET)
- (iii) School of Graduate Studies, (SGS)



...Our History

Welcome to Pwani...



The Old-Look main gate



The New Main gate



The Old Administration Block



The New Administration Block

School of Agricultural Sciences and Agribusiness

This school has two (2) departments: -

- i) Department of Animal Sciences (DAS)
- ii) Department of Crop Sciences (DCS)

School of Education

This School has four (4) departments:

- i) Department of Curriculum Instruction and Education Technology (CIET)
- ii) Department of Educational Psychology and Special Needs (EPS)
- iii) Department of Educational Foundation and Policy Studies (EFP)
- iv) Department of Educational Administration, Economics and Planning (EAEP)

School of Humanities and Social Sciences

This School has three (3) departments:

- i) Department of Social Sciences (DSS)
- ii) Department of Literature, Languages & Linguistics (LLL)
- iii) Department of Philosophy and Religious Studies (PRS)

School of Pure and Applied Sciences

This School has four (4) departments:

- i) Department of Maths and Computer Science (DMCS)
- ii) Department of Biological Sciences (DBS)
- iii) Department of Chemistry & Biochemistry (DCB)
- iv) Department of Physics

School of Human and Health Sciences

This School has four (4) departments:

- i) Department of Nursing
- ii) Department of Medicine and Dental Surgery
- iii) Department of Food Nutrition and Dietetics
- iv) Department of Public Health
- v) Department of Anatomy and Physiology

School of Earth and Environmental Sciences

This School has two (2) departments: -

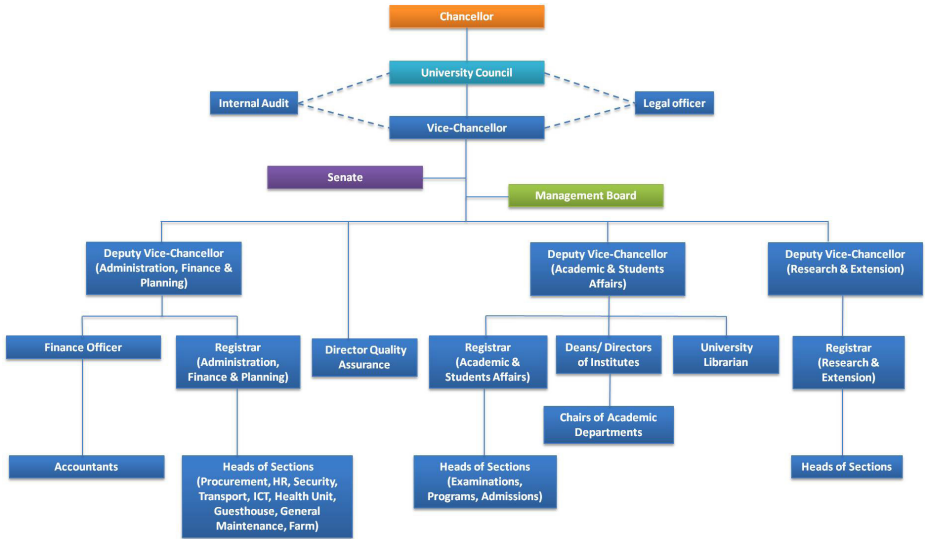
- i) Department of Community Development
- ii) Department of Environmental Sciences

School of Business and Economics

This school has two (2) departments

- (i) Department of Business and

Current Management Structures



Economics (DBE)

- (ii) Department of Hospitality and Tourism (HTM)

The departments administer the various programmes currently taught in the University.

The **Academic Division** also oversees matters of students' welfare, a department headed by the Dean of Students. This department offers a wide range of services to support students as they undertake their studies. The main goal of this service is to facilitate a student-centered and conducive learning environment, reflecting the university's vision, mission and objectives. This includes accommodation issues, entertainment, sports, cultural activities, career advisory and placement advisement.

The **Administration, Finance and Planning (AF&P)** division handles all matters pertaining to the day-to-day running of the university, financial matters and ensuring the institution is on the right track in terms of planning for the future.

The **Research and Extension (R&E)** division takes care of the other core mandate of the university: To undertake research and collaboration

with other relevant institutions in areas of academic interests for the sake of improving knowledge and service to the Community.

Key Arms of the University

- i) The University Council: Headed by a Chairperson appointed by the Cabinet secretary in-charge of Education
- ii) The Senate: Chaired by the Vice-Chancellor of the University
- iii) The Management Board: Chaired by the Vice-Chancellor of the University

These entities have powers to create committees and boards to facilitate the day-to-day management of the University and its affairs.

Some of the Key Documents guiding operations of the University are:

- i) The Universities Act 2012
- ii) The University Charter
- iii) The University Statutes
- iv) The University Master Plan
- v) The University Service Charter
- vi) Examination Policy
- vii) University Strategic Plan 2014-2024
- viii) Public Finance Management Act 2012
- ix) CUE - Universities Standard Guidelines

Arriving at Pwani University for the First Time

Joining Pwani University

Students admitted to the university go through a registration process as the first activity to become bonafide students of PU. This may be done on-line or in a temporary registration centre is normally set up for this activity. The exercise in most cases continues for about two weeks. Alongside the registration, the new students undergo an orientation process. The office of the Registrar Academics and Students Affairs, in conjunction with the Dean of Students, manages the orientation programme. Things you need to do to complete registration:

- Pay your fees (bank) and log in your student portal to update your status.
- Ensure you have uploaded all required documents and passport photos.
- Select appropriate courses/ subjects on offer for your respective course on the specific semester. You will be issued with Curriculum Action Forms (CAF's) to guide you. However, check with your COD and /or refer to University Prospectus /or PU Website for more details.
- Ensure you have correctly registered the Courses you are

expected to take. Normally there is a maximum of eight (8) Courses per semester and a minimum of Five (5) unless advised according to the program you are undertaking.

- If you change your mind about the program invited to take, check for instructions on how to make an inter/intra school transfer.
- Ensure you have the right/ adequate equipment and resources to follow your studies on-line.
- Identify and get location contacts the COD of your respective department or Dean of the school.

NB: After registration, you will be issued with a Student identification Card (ID). Be in possession of your ID at all times. This card will be required any time you seek services which you are entitled to as a student of PU. Never share your identification card with another student. This shall constitute a serious offence which may attract a disciplinary action against you.

After registration, ensure you:

- Copy and review your timetable to ensure all is right. Plan your time well to follow the teaching.
- For face to face sessions find and

locate the various lecture halls and classes where you will be taking your lectures.

- Get yourself a suitable accommodation either on-campus or off-campus and settle down. For your own comfort and convenience you may need:
 - i) Mosquito net
 - ii) Umbrella
 - iii) Clothes hangers
 - iv) Laundry supplies (pegs, pails, basins, soap dish etc)
 - v) Stationery (books, pens, pencils, ruler, foolscaps)
 - vi) Computer/Laptop/Phone.
 - vii) Beddings/towel (Blankets/ Duvets/Bed sheets/Pillows/ Toiletries.
 - viii) Notebook for orientation.
 - ix) Personal Calendar.
 - x) Clothes for all weather.

Please note the following:

1. Do not bring Firearms/ Weapons/pets or Alcohol on campus
2. Do not engage in illegal drugs or criminal activities
3. Music systems, TV sets, Printers and Photocopiers, cooking utensils are not allowed in the University hostels.
4. Avoid engaging in behaviors or conducts that may interfere with your learning and other people's peace and security.

What is new in your life as a student at the university?

As you begin university life at Pwani you may experience changes such as: -

- Having to share a room with people or a person, you have never met before.
- Having to organize things on your own, follow schedules where there are no bells, prefects, parents, or teachers to push or guide you around.
- Having to know and meet people from different places with varied beliefs, values, faiths and other backgrounds.
- Having to handle your own financial matters with no one to guide you.
- Sometimes having to mix freely with people of the opposite sex.
- People asking you to do things you have never done before.

Adjusting to the New Life at the University

One way you can quickly adjust and cope well with life here is by being ready to face diversity, and learn to live with new people. Engage them in discussions on issues pertaining to sleeping habits, music tastes, friends, alcohol (and other drugs including cigarette smoking). Negotiate on room organization, cleaning duties,

reading, entertainment etc.

Learn; don't necessarily copy other peoples' way of doing things. Therefore, keep an open mind for you to learn, but make independent decisions. Please contact the respective housekeepers, janitors and/or Caretakers for assistance; Each Hostel off-campus has a caretaker. Just let them know in case there is something disturbing you. Ensure you have contacts in case of emergencies. Note that you can also call the dean of students in case these parties cannot sort out your issue.

Getting new friends

Talk freely and introduce yourself to other students whom you are likely to meet during lectures, or in your halls of residence (hostels) or your prayer and worship places. It is advisable to get involved in clubs, organizations and other co-curriculum activities. They help you integrate with the system fast and avoid boredom. Always ensure you take the right action in preventing yourself against contracting COVID-19.

Make wise decisions

You will be required to make many decisions for the first time on your own. Make sure you know the University rules and regulations to avoid breaking them. Each time as a student and even in future, make wise decisions regarding activities you engage in and

issues concerning your studies. It's good to plan how you spend time and with whom. Decisions such as consumption of alcohol "Mnazi" in "mangwes" or chewing "Muguka/miraa" or taking the risk to swim in the open sea or just going out to have fun in a club must be carefully considered.

Danger of Swimming

Due to its proximity to the Indian Ocean, Kilifi town and Pwani University environs offers a unique scenic reminiscent of the famous "tropical Paradise" hence it is a very popular tourist destination in Kenya. There are beautiful beach lines for those who want to relax and enjoy the sea breeze. However, it is important to note that the beach lines can be risky for swimming.

The seabed is dotted with steep cliffs and abruptly experiences some strong under water currents. The water depth changes drastically with the movement of tides. Students are advised to desist from the swimming excitement. Deep underwater caves make swimming in Kilifi beaches a risky affair.

You are cautioned that it is quite risky to swim along the beaches of Kilifi

Peaceful co-existence

As a PU student, it's advisable to with an open mind to get maximum benefits in your career and social life. You will meet people from different cultures, ethnic

backgrounds, religious backgrounds, and people with diverse beliefs and values. You should maintain an open mind to co-exist amicably and

peacefully without losing your own values in such circumstances. Make use of this diversity to learn and do as much as you can for your academics.

2 Office of the Dean of Students Affairs

The office of the Dean of Students (DOS) is entrusted with the responsibility of taking care of student's affairs and addressing their concerns related to the welfare. The DOS office will support students to settle down in their new life, provide accommodation services, provide guidance and counseling,

provide guidelines to conduct students' sports, games, entertainments and general career and life mentorship.

We firmly believe that a University is a place where faculty and students share academic goals and aspirations freely. In addition, that working together strengthens the teaching



The University
Library

and learning process. In this noble idea then the DOS office commits to-

- Excellence in service delivery
- Integrity and Honesty
- Caring for the well-being of members of the University community

As we co-exist we believe that the theme of “Do No Harm to others” is a non-negotiable value. It is therefore important that an accurate self-understanding becomes your foundation for empathy, compassion and understanding to others. This will lead us to be socially and ethically responsible in our stay as Pwani University community members.

Accommodation

The University has limited space for accommodation. Only a few students can find on-campus accommodation. In most cases, this is reserved for students sponsored by the government (KUCCPS) and joining the university for the first time (Fresher's). Students who miss on-campus accommodation and the Self-sponsored students may have to seek off-campus accommodation. The office of the Dean of Students maintains a register of potential accommodation places within Kilifi Town. Most of these Hostels are available around Kilifi town i.e. “Kibaoni”, “Charo wa Mae” and “kwa Mwangi” market centres. Make sure you get affordable

accommodation in a safe and accessible place that will not inconvenience your movement in and out of campus. However, note that all students are free to choose to live on- or off-campus. But take precaution of the COVID19 challenge. Contact the DOS in case you have difficulties in locating hostels for accommodation or situations where you have challenges with your place of accommodation.

Catering Services and Shopping

Dining Services for students are available in the main dining hall. Here you are expected to pay for the food at a cashier's desk before you are served. The cashier will then issue you with a receipt, which you show at the counter to get your food. The Students Catering Unit (SCU) provides all the utensils (plates, spoons and cups). Food and all cutlery should not be removed out of the dining hall. Service in this DH is through the Cafeteria system and students are expected to line-up to get their meals.

Queue jumping violates other people's rights and cannot be tolerated.

Take note of the times for serving meals, which are provided by the SCU. Menu for meals is posted at the entrance of the DH and on the inside walls. The SCU offices are currently situated near Hostel 4.

This Dining Hall (DH) is not restricted to any student whether resident or non-resident. It is against our Public Health policy to eat your meals outside the DH or take meals to the hostels.

Alternative Dining Areas

Students are free to take their meals elsewhere other than the SCU Dining Hall. The students Union (PUSA) also rents out facilities for students to operate canteens where snacks and other light foods are served. Outside the main gate are a number of food Kiosks and hotels. However, you may need to be cautious with food served in these places because quality and safety is not assured.

NOTE: Cooking in the University hostel rooms is prohibited and is illegal. Anybody found cooking will have to vacate the hostels with immediate effect.

Shopping

There are several places where you can do your shopping. These include: Kibaoni/Charo wa mae area– The shopping centre outside the campus at Gate C; it is also a residential area for many people including some students. It has a lot to offer including:- households items, Stationery, Foods (cooked and those for cooking) on sale – You can get all needs there. There are also butcheries, restaurants

and pubs, salons and barbershops (Kinyozi). Dressmaking, tailoring, shoe and bag mending and computer services are also available at Kibaoni.

Tuck-shops –There are two tuck-shops located in the student's common room near hostels and another one in Hostel six, serve your basic needs like food stuff, toiletries etc.

Tuskys Supermarket – It's approximately 500m from the University gate. As you come from Mombasa, it is located immediately after the Kilifi Bridge. It is therefore accessible by foot from the University. You can also use Boda Boda or tuk tuk to reach the shopping mall. It is currently the largest shopping outlet which offers a wide range of products. There are other small supermarkets at the town centre.

Open Air Markets – There is an open market at the "Charo wa Mae" trading centre for groceries and old wares



(mitumba). This market is very active on Fridays. Also, about one (1) km on the way to Malindi i.e. "Koroshoni" (former Cashew nut factory) there is a weekly open market of a wide range of household items. It is open on Saturdays only.

Oloiptip Market and Kilifi Stage: This is another shopping centre with groceries

and other household inputs. It is at the main Kilifi stage (Town Centre). This place offers book shops, electronics stores, clothing malls etc.

Next to this Main stage are the County Government offices, the General Post Office, Kilifi referral Hospital, Police station and Aga Khan Hospital- Kilifi.

3 Finance Matters

Financial Aid and Bursaries

Limited opportunities for financial support exist through the Dean of Students office. The office tries as much as possible to link needy students with potential donors. If you have an idea of a potential donor(s) please see the DOS for support/recommendations.

The University shall normally communicate through its official channels the availability of internal bursaries or scholarships to students. Such financial aids if available are disbursed in accordance to the bursary allocation guidelines. Students are encouraged to try as much as possible to explore other sources of funding for their studies. The Constituency development Fund (CDF) and County/

Ward Bursary are some of the options. Those eligible should apply for HELB loans. Please consult the DOS for further advice.

NOTE: Needy students should register with the DOS immediately they join the university.

How do I keep my Finances Safe?

It is always wise to have an account where you can keep your finances to avoid mismanagement or losses. Some students may already be having bank accounts. Those without bank accounts may open them right here in Kilifi in the following banks:-

- Equity Bank: Located at Kilifi Town opposite Barclays Bank and has an ATM at the entrance.
- Cooperative Bank: Located along Hospital road at Kilifi Town has ATMs located at the Imarika Sacco House and KOBIL Petrol



Station near the University.

- ABSA Bank: Located opposite the Equity Bank and has ATM at the premise
- Post Bank and Imperial Bank: These two are located next to each other at the Kilifi Shopping Arcade.
- KCB: Located opposite Cooperative Bank. It has an ATM within the university.
- National Bank: Located next to Kilifi Shopping Arcade.
- Diamond Trust Bank: Located next to Tusky's Supermarket.
- Chase Bank: has a satellite branch at the KOBIL Petrol Station

Always be careful how you handle your money and you are advised never to leave your money in your room, no matter how safe you think it is.

BEWARE OF CONMEN!

Any official transactions concerning University fees should be done directly from the bank. The banks will inform the University on your transaction. You should keep your Bank slips as proof of payment. The University normally update your status within 24hrs. Check your portal to confirm. Avoid any intermediaries in your transactions. The risk is high when freshers are reporting and at the end of each semester.

Fees

All first years are expected to have received their fee structures attached to their calling letters. Your fee balance will always be shown in your fee statement, which can be accessed through the student portal in the University Website. Get the necessary

information to start operating your account.

Any changes in the fees will be communicated by the Finance division through various ways such as circulars, letters and through PU student emails.



Transport 4

Cars on Campus

A student with a motor vehicle within university premises should get a written permission from the administration on condition that he/she provides the required documents. Vehicles are parked at the owners' risk.

Bicycles

This is one of the means of transport to the University particularly for students staying far. However those riding bicycles should observe rules and rights of other pedestrians. The University currently does not have Bicycle Park or areas designated for bicycle parking. There is no provision for security even where parks are provided. Students riding bicycles should ride carefully not to cause accidents. In addition, they should park them in places that

are not near entrances to avoid inconveniencing other road users.

Motor cycles, Boda Boda and Tuk tuks

This is a common means of transport around Kilifi. They are allowed only in some areas within the campus. You can use them when you have to carry a bulk luggage to and from the University. However, you are cautioned that most riders are not trained and some are completely ignorant of traffic rules and regulations. As such, they can make some irrational decisions while on the road.

Also Note that most tuk tuks and Boda Boda are not licensed or insured. Be careful when using them at night because the conduct of the drivers is unpredictable.

Health and Medical Matters 5

Kilifi and the Coastal region where Pwani University is located is a zone with high incidences of Malaria. Avoid exposing yourself to mosquito bites. Ensure that you sleep under a treated mosquito net. Staying late in the night outside e.g. flower gardens or in "mangwes" puts you at high risk.

Ensure the conditions around your room do not encourage breeding of mosquitoes.

Consult the Students Health facility or the Dean of Students' office for any "special" or pre-existing medical issue/ conditions as you join the University.

Medical Attention while on Campus

The PU students Health facility is accessible 24 hours to provide medical services and preventive programs for students (medical fees are paid-up alongside tuition fees). You need to produce your student I.D. and proof of completion of paying the required fees in order to receive services at the Health Unit.

The Students' Health facility offers services such as routine medical and injury care, physical examinations/health Courses, laboratory services, physical therapy and a full-service pharmacy. It has a Laboratory from where medical examinations can be carried out to facilitate quick diagnosis. The pharmacy is stocked with essential drugs for curative and emergency conditions. In addition, students and staff can get counselling and family planning advice from this facility

Students feeling unwell should visit the health unit. In case of severe cases or emergencies, inform the Hostel janitor to organize to get sick student to the health unit.

The PU Health Unit also has an Ambulance used to handle emergencies within the university. If a student falls sick in any part of the university and cannot walk to the health unit, he/she can contact the nearest security officer or the Dean of Students. For those residing in the hostels and, for all night cases students can contact the Janitors or the security Guard on night duty to assist.

Cases which the university health unit cannot handle are normally referred to the Kilifi County Referral Hospital or Coast Referral and General Hospital-Mombasa or any other relevant health facility.



Students and/or Guardians are advised to make own arrangements for Insurance cover.

Dentistry/Optical & Dermatological Attention

Dental and optical services are not offered at the PU Health Unit. Students who may need such services will be required to make their own private arrangements to access them. Such services are mostly available in Mombasa; however, some are available in Kilifi.

Aids Control Unit

The University has an HIV/AIDS unit. It provides HIV/AIDS counseling, testing, and post-testing services.

This unit has a fulltime employee who is also a counselor. Students can get free advice on general matters about HIV/AIDS anytime within working hours. The unit works closely with students' Peer Educators on matters of behavior change, communication and other issues related to HIV/AIDS.

It has an advisory service to support PLWA, prevention of Mother-Child transmission and matters of male circumcision. Feel free to interact with the officer in charge to know more about HIV/AIDS. General Guidance and Counselling services are also available.

COVID-19 Disease

Kenya like most countries of the world are affected by a new pandemic known as COVID-19. COVID-19 is the infectious disease caused by the most recently discovered coronavirus. The COVID-19 virus spreads primarily through droplets of saliva or discharge from the nose when an infected person coughs or sneeze. At this time, there are no specific vaccines or treatments for COVID-19

What are the symptoms of COVID-19?

The most common symptoms of COVID-19 are fever, dry cough, and tiredness. Other symptoms that are less common and may affect some patients include aches and pains, nasal congestion, headache, conjunctivitis, sore throat, diarrhoea, loss of taste or smell or a rash on skin or discoloration of fingers or toes.

What should I do if I have COVID-19 symptoms and when should I seek medical care?

If you have minor symptoms, such as a slight cough or a mild fever, there is generally no need to seek medical care. Stay at home, self-isolate and monitor your symptoms. Contact the University on hotline number **Hotline number 0790 148 814 or 0770 593 807** To get assisted.

Students are urged to do what they can

to reduce chances of being infected or spreading COVID-19 by taking some simple precautions:

- Regularly and thoroughly clean your hands with an alcohol-based hand rub or wash them with soap and water
- Maintain at least 1.5 metre (6 feet) distance between yourself and others.
- Avoid going to crowded places, hugging or shaking hands.
- Avoid touching eyes, nose and mouth.
- Follow good respiratory hygiene by covering your mouth and nose with your bent elbow or tissue when you cough or sneeze.
- Stay home and self-isolate

even with minor symptoms.

- Wear a mask to avoid infecting or being infected others.
- If you have a fever, cough and difficulty breathing, seek medical attention as stated above
- Keep up to date on the latest information from trusted sources, such as WHO and MOH



6 Career Guidance and Counseling Services

Pwani University students are encouraged to seek for therapy services available such as;

- Individual/ Group counseling (Peer, family, mental counseling)
- Preventive Guiding and Counseling
- Career/Vocational Guidance

and Counseling

- Health Guidance and Counseling
- Peer counselors who are trained and empowered with skills for same are available.
- Please have a session and discover yourself.

Mails and Communication 7

In-coming Mail

In-coming mail for students are received at the University registry then sent to the DOS office. At the DOS the mails are delivered at the mail desk where students can pick them. For ease of accessing your mails please ask those sending the mails to include your admission and mobile phone number. The officer in-charge will call you to pick your mail.

Mail can be sent through the Kilifi Post offices situated along Hospital road in Kilifi Town. With new developments on communication, students are encouraged to open email accounts and make use of them for communications.

Communication to Students

Communication to students is majorly through the Notice Boards and the PU website. Such notice boards are fitted in strategic points within the University. The University has also secured some of them. Some of the locked notice boards include the ones located the Library, main admin office etc. The University also compliments this with other modes of communication including use of the PU website, emails, bulk SMS and sometimes the social media.

Newspapers and Newsletters

The local daily newspapers are provided at the University library. Please visit the library every day to access the local daily newspapers.

Accessing On-line library materials

The library maintains a variety of on-line reference materials and journals. If you have a laptop, tablet computer, or smart phone you can access them on-line in any of the many hotspots in the tuition blocks. They include books, newsletters journals etc.

The university also publishes a newsletter "The Campus Bullet-In" biannually. This newsletter is free to students and members of staff.

Reading Areas

The University has provided several outdoor places for reading; They include, Reading Sheds strategically spread across the compound. They are fitted with seats and a flat board for writing. Students can read here or conduct group discussions.

Library

Within the library there is space for reading. Here you have to maintain

silence. It may not be conducive to hold discussions here.

Reading tables: Reading tables and chairs have been placed along the

corridors adjacent to the tuition blocks. Each table has 4-6 chairs. Students can hold discussions here or do their assignments.

8 Clubs and Societies

Pwani University has many clubs, organizations and societies registered officially under the Dean of Student's Office. Membership in the academic community accords students certain

freedoms and responsibilities. There are different categories of clubs and societies based on Academic, departmental, media, music/ performing, arts, recreational, religious and other special interests. Some of them include:-

- Environmental science Club,
- Animal Science Club
- Red Cross Society,
- Geography society
- Christian Union,
- Muslim Association,
- Chama cha Kiswahili
- Catholic Association
- SDA
- PACE
- Psychology Students Association
- Integrity Club



- Jasiri-Kenya Scouts Association

In these clubs and societies, you will have an opportunity to develop skills in teamwork, conflict management, budgeting, planning and leadership among other skills.

The clubs and societies on campus should reflect the values and attitudes of our academic community. As a community of Pwani University, our clubs and societies need to adhere to the mission of the University and its supporting by-laws, statutes, and policies. Therefore, all student groups are expected to be familiar with and conduct themselves in accordance with the "Student Code of Conduct". For purposes of order and smooth operation of Clubs and Societies, it is expected that each of these organizations will develop and maintain a list of its students, the group's constitution and bylaws.

Above that, the clubs and Societies should have an advisor/Patron who is a PU faculty or staff member

NOTE: The University discourages clubs/association/groups founded on Ethnic grounds. Such groupings will not be permitted to operate within the precincts of the University.

Why get involved in Clubs / Organizations?

Participation in Clubs and societies has a wide range of benefits. You get to

know more from others and you may have an opportunity to be exposed to new ideas in life. In particular, clubs and societies may:-

- Help you to meet people and make friends.
- Help you meet and associate with people in the corporate world and thus establish contacts that may get you employed.
- Help you develop friendships that may provide support during difficult times.
- Give you a chance to contribute/work with the community (e.g. through community service) which provides a sense of purpose.
- Skills learned in these clubs / organizations and experiences are important to you in your future employment and career. Remember some employers are keen on the role you play in assisting the society.

How Can I find out about Clubs and Organizations?

You can check from the Dean of Students Affairs Office or through PUSA offices.

Leaders of the clubs and societies will decide for recruitment of new members in the beginning of the academic year. Choose which club /society to join.

Note that some clubs have regular and specific dates and times of meetings

while others do not, so it is your duty to be on the lookout.

However, do not join too many clubs as this can eat into your time for studies

Manage time to avoid Stress

Lack of time management will be a major cause of stress while you go through your studies if you are not careful. It is good to plan your time well by: -

Setting priorities - Know what needs to be done before another, sorting out major tasks from minor ones, urgent and non-urgent and long-term from short-term goals

Forward Planning - It is not about being too rigid; it is about budgeting your time and knowing clearly what you would like to do at a particular time. It saves you from confusion.

Avoid procrastination - Always do

what you should at that time, never push it ahead or postpone in that way you avoid accumulating too much work. Just plan and concentrate but take breaks as necessary.

Other important problem-solving skills you may need:

- First identify the problem you have
- Identify the priorities and goals
- Identify the possible solutions
- Consider each solution vis-a-vis your priorities and goals
- Choose the best option and plan to implement your solution

What may not be an infective way to handle your problems?

- Smoking
- Alcohol consumption
- Taking drugs
- Unhealthy diets
- Overworking



General Code of Conduct 9

Pwani University is committed to providing and maintaining a peaceful and conducive environment for all members of the community. All students have a responsibility to ensure that this is not violated. Students are reminded to abide by the rules and regulations as provided in PU 6 form, which all students sign before joining the university. The rules and regulations can be availed to you on request by the DOS. This handbook has some of the rules and regulations particularly those dealing with Examinations and on-campus accommodation.

Motor Vehicle

A student shall not keep a motor vehicle on University Premises without written permission from the Registrar. Such permission will not be given without proof of a current driving license, a valid road tax license and a current certificate of insurance. Such permission may be refused or withdrawn without assigning any reason thereof.

Responsibility of University property

- (i) A student or group of students will be held responsible for any damage to University property resulting from misuse or willful destruction of such property

by the student or group of students.

- (ii) Any student involved in willful destruction of university property and/ or engaged in arsonist acts will be expelled.

Academic Responsibility

Attendance of lecturers, tutorials, seminars, practical's and other scheduled courses of instruction are compulsory. The Dean of relevant School must authorize non-attendance due to illness or other good cause.

Noise and Disturbance

- i. Any student found misbehaving in the hostel shall be referred to the University security office for further action and appropriate action taken as per the rules of the university.
- ii. All forms of noise or disturbances will not be tolerated in the campus. Noise by playing loud music in or near tuition blocks, offices and hostels is strictly prohibited.
- iii. It shall be an offence against University regulations to create unreasonable noise or behave in an unruly or rowdy manner to the disturbance or annoyance

of other occupants of University premises.

Loss of or Damage to Student's property

- i. The University disclaims all responsibility for losses of or damage to student's property while on University premises.

Fire Fighting Appliances and other facilities

- i. All students must ensure that there is no wastage of electricity, water and other facilities provided. Lights and fans in classrooms must be switched off if not in use.
- ii. It shall be a serious offence against University regulations to interfere with, damage or remove, other than for firefighting purposes, any firefighting appliances.
- iii. Conducting any form of commercial business and use of electrical heating appliances/ cooking in the hostel rooms is strictly prohibited

Procession and demonstration

- (i) It shall be a serious offence for any student or group of students whilst within the University to convene, organize, participate or in any way be involved in any demonstrations,

gathering or processions or in any unauthorized ceremonies, gatherings or demonstrations for which permission has not been obtained from the University or Government authorities.

- (ii) It shall be a serious offence for any student or group of students to organize or participate in pickets or in any manner prevent any student or member of staff from performing their normal duties.

Drunkness/Fighting

- i. Pwani University compound is an Alcohol and Drug free zone. Drunkenness and disturbances of other students because of drunkenness will constitute a serious offence.
- ii. It is an offence to attend lecturers, practical's or any University function while drunk/ under the influence of drugs/ narcotic substances.
- iii. Fighting amongst students or staff of Pwani University in the University sanctioned activity is prohibited.

Drug-Taking and Possession of drugs

- a) It is a serious offence against University regulations to be in possession of or take drugs as a student of this University within

its precincts.

- b) Storage of alcoholic drinks/ drugs/narcotics in the hostels or compound is strictly prohibited.

Weapons, Pornography and Extremism

- i. Being in possession of dangerous weapons such as firearms, pangas etc or any explosive materials within the University is a serious crime leading to automatic expulsion.
- ii. Production and /or circulation of pornographic material, gun running, money laundering and other cyber crimes will lead to expulsion from the University
- iii. It is a serious offence to use the internet or platforms of the internet and social media to attack, deface or malign the character and integrity of another student or staff of the University.

- iv. It is against these rules for any student to engage, support or facilitate acts and actions associated with Violent Extremism against other students or faith-based groups of the University.

Correspondence

- i. Correspondence to the press or other mass media by members of the University in their individual capacity, individual students or officials of the students' organization and other students should bear their individual names and their private addresses.
- ii. No student shall make any public statement on behalf of the union or other societies on matters affecting the University without special authority from the Vice Chancellor.
- iii. Correspondence by individual



students or by officials of the Students' Organizations (including students' societies) to representatives of foreign governments, or other sponsoring bodies, shall be sent through the office of the Dean of Students, who will forward as appropriate.

- iv. Invitation to Government Ministries, representatives of foreign governments or other important persons to visit the University in their official capacity shall be notified to the University authorities in good time.

On-Campus Accommodation services

Room Allocation and Clearance

- i) No student is forced to occupy the university's rental accommodation.
An application for on-campus accommodation is neither a guarantee for offer of the space applied for nor any space at all.
- ii) The process of this application will be based on
- First come first served basis
 - Availability of spaces
 - by a draw when the first two methods cannot be

applied (lottery basis)

- iii) Once allocated a room, the student will not be allowed to transfer or exchange except on medical or such other approved special grounds.
- iv) No refund will be given after payment. Any overpaid money will be carried forward or transferred to tuition.
- v) Students shall be expected to share rooms, in addition to other facilities of common use e.g. wardrobes and reading tables. Those who refuse to share common facilities will lose their residence for the rest of their stay in the University
- vi) Every student is expected to sign an inventory form accepting responsibility of the condition of the room on allocation.
- vii) Students should clear from the hostel by signing out with the housekeeper at the end of the semester. A student who fails to clear and leaves their room locked will be surcharged Kshs.3500/= to cover opportunity costs. In addition, the room will be broken into to access the facility and any extra expenses incurred will be charged to the student.

Selling and Buying of Rooms

Students involved in buying and selling of rooms will be fined and expelled from the room immediately. They will not be allocated a room whatsoever in the University for the duration of their study.

Use of the Facilities in the Rooms

- i) Misuse and destruction of property in the hostels by a student or a group of students will constitute a serious offence, and the students or group of students involved in such an act will be charged for any damage caused.
- ii) Students will be responsible for the security of their property. The University will not be held responsible for the loss or damage to students' property while in the halls of residence. Students are supposed to lock their rooms at all times and carry the key with them while on session.
- iii) Cooking is not allowed in the rooms. It is not only risky to students but also to University property. Any losses or breakages will be surcharged accordingly and the students will be expelled from the hostels.
- iv) Removal of furniture and equipment from students' rooms or any other part of the hostel, without permission from the Accommodation office is forbidden, those found will be surcharged accordingly.
- v) It is a serious offence for any student whilst in residence to organize or participate in any demonstrations or ceremonies/ parties for which permission has not been granted.
- vi) There should be no undue noise in students' rooms and common rooms at any time as it disturbs students who study in their rooms. Students disturbed in this way either by their roommates or those in the neighboring rooms have the right to report the disturbances to the Housekeeper or the Janitor on duty immediately for appropriate action. Causing of continuous disturbance will lead to loss of one's residence for the rest of one's stay in the University.
- vii) Being in possession of drugs such as alcohol, cocaine, bhang, or any illegal or banned drugs will not be allowed in the hostels. Anyone found will be expelled from the hostels.
- viii) Drunkenness, unruly or rowdy behavior within the halls of residence shall be considered an offence. Those charged with the offence of disturbing the

peace in the halls will face loss of residence for the rest of the academic year.

- ix) Drinking in the halls of residence or common rooms is an offence. Those found doing this will lose their rooms for one academic year.
- x) Drug abuse is a serious violation of the University rules and persons found to be engaged in such conduct are a danger to the rest of the student community and will face loss of residence for the rest of their stay in the University
- xi) Threats, incitements, insults and fights are an offence. Those found guilty will lose their rooms for the rest of their stay in the University.
- xii) No stickers or campaign posters should be placed on the walls of halls of residence and writing in the walls. Costs of removing the same will be charged to the student concerned.
- xiii) Involvement in pornography, prostitution activities, gun running, money laundering and other cyber crimes will lead to expulsion from the hostels.
- xiv) Involvement in business activities focusing on profit gain such as photocopying shop, scanning, lamination,

saloon, barber shop will lead to expulsion from the hostels.

- xv) The Accommodation Services staffs have the right to carry out unannounced room inspection periodically.
- xvi) Non-resident students are not allowed to use the university hostel facilities like washing clothes, Ironing and bathing. Those found misusing the facilities these will be surcharged.

Visitors to the Rooms and Cohabiting

- i) Male Visitors to the ladies hostel will be permitted between the hours of 10.00am to 10.00pm and the vice versa. Those found violating these rules will lose their residence for one academic year.
- ii) Visitors are NOT allowed in the rooms overnight. Disciplinary action will include loss of residence for the rest of one's stay in the University.
- iii) Cohabiting is unethical and it is prohibited. Those found practicing it will be expelled from the hostel.

Theft Cases

- i) Any student found guilty of theft will face immediate expulsion from the hostels as well as

suspension from the University pending determination of the case by the Senate Students Disciplinary Committee.

- ii) Proven cases of theft will lead to non-allocation of hostel space in future.
- iii) All theft cases will be dealt with according to the Rules and Regulations governing student conduct as well as according to the Law of the Land. Report all theft cases to Security Services rather than taking the law into your hands.

Disciplinary Procedures relating to Hostel Accommodation

- i) The Accommodation Officer is empowered to take action against any hostel resident who is in breach the above Rules and Regulations in line with the provisions of Pwani University statutes and Rules and Regulations Governing students conduct in the University.
- ii) Upon taking action, the Accommodation Officer shall communicate in writing to the Dean of Students and any other university organ related to the matter.

Alcohol Use

- i) Use of alcohol within the

university learning environment is not allowed. Students attending lectures or lab practical's while drunk will attract disciplinary action.

- ii) Alcohol shall not be taken in the hostels. In any event you are cautioned that excessive alcohol consumption affects your health and reasoning. If you must drink then do it responsibly.

Production of Pornographic materials

- i) It is a serious offence against University rules and regulations to be involved in production, publish, or circulate any pornographic materials in PU student hostels. Students are cautioned not to engage in such acts within and outside PU.
- ii) Those caught in this matter shall be expelled from the hostels immediately and disciplinary action taken in line with the rules and regulations governing student conduct in this university.

What it means when you join Campus? From the day you join Pwani University, your studies are programmed. You have a starting and exit point. You have to take responsibility to make this program materialize and graduate on

schedule.

Students of Pwani University are expected to attend all classes on-line or in-person. They sit for exams such as CATS or Final examinations either on-line or in-person.

A student should attend classes promptly in whichever mode being offered for courses that he/she has registered for.

NOTE: If you plan to be out of campus and there is a possibility of missing a CAT, Practical or class or even main examinations, consult with your lecturer and COD. You are advised to get a written authorization and or fill appropriate forms. Seek advice from the COD, Dean of school or the Dean of students.

Your Admission Number

It is always important to remember your Admission Number all times. All admission numbers are unique to each individual and forgetting it or making errors on the same in any document can have consequences.

When does Learning begin?

Learning starts immediately after the registration and orientation process ends. Ensure you check the Time Table at the students' notice boards or University website and develop your mini timetable for your Courses and Lecture halls. Lectures take place between 7.00 am to 8.00 pm during Weekdays depending on the mode of

delivery.

Change of Program (Course)

A student may decide to change his/her program within the first year due to genuine reasons. A window of transfer to other programs will be declared by the Registrar ASA. A student will only be allowed to change a course if H/She has qualified to enrol in the new course/program subject to the University policy on this matter.

Intra – school - change of course from one department to another within a school.

Inter-school - change of course from one school to another

The office of the Registrar (Academic and Students' Affairs) shall advise on the Inter and Intra school transfers.

The University issues a calendar of activities each semester. This almanac shows the major academic activities. Change of dates for any activity that affects or touches on students in any way will always be communicated in good time. Such communication is normally by circulars and shall be posted in all notice boards.

Co-Curriculum Activities

Students at PU get involved in various co-curriculum activities through the University sports office, students Union PUSA, church groups and Societies. These groups normally plan activities

that are not necessarily indicated in the University Academic calendar. The affected groups normally fix such activities in a way to avoid interruptions on the academic calendar and duly communicate to all concerned students.

University Examinations

All courses are normally examined at the end of the semester in which those courses are taken. The examinations shall normally be offered in a sit-in or online arrangement.

Please check the Examination timetable issued before the examinations start. Familiarize yourself with venues where you will sit for the exams. In case a unit is omitted from the timetable, inform the lecturer or COD concerned.

Continuous Assessment Tests and University Examinations

Continuous assessment tests (CATS) normally contribute 30% and End Semester exams contribute 70%. Each course will have 2-3 CATS from which an average score will be worked out. CATS can be given in various forms; on-line, sit in, take-away, or open book depending on the programme.

Academic Awards

Pass mark in all courses shall be 40% (except for Nursing and Diploma Animal health course which is 50%)

Result slips and Transcripts
Results slips will be given at the end of each semester while transcripts at the end of an academic year. This statement shows your academic performance. The result slip/transcript will show lateral grades and cumulative average score (CAS) with the following letters:

Pass	(P)
Academic Warning	(AW)
Incomplete	(I)
Withdrawal	(W)
Discontinuation	(DISC)

What is an Academic Warning (AW)?

A student who fails in more than half of the Courses taken in any one academic year shall be given an academic warning

What is an Incomplete (I)?

An Incomplete grade (I) is issued at the end of semester only. It is assigned to a student who, because of reasons acceptable to the senate, is unable to complete the work or course. Further registration or class attendance shall not be a requirement to complete the course.

What is Withdrawal from a unit (W)?

A student can withdraw (W) from a unit without any penalty within the first four weeks in the semester. The student must withdraw officially by completing the WITHDRAWAL FORMS from the Registrar

Academic and Student Affairs.

Withdrawal is done only in special circumstances in the fourth week provided reasons are acceptable to the lecturer concerned, COD, Dean of school, and approved by the University Senate.

What earns you a Discontinuation (DISC)?

A student who fails in all courses (Courses) taken in one semester will be discontinued. A student whose cumulative failures after an academic warning from the previous semester are more than half the Courses taken, in two consecutive semesters will be discontinued. A student who fails a retaken unit shall be discontinued

Failed Examinations

A student who fails to score above the pass mark shall retake courses or repeat the program as may be provided by the examination policy

Familiarize yourself with the examination policy

Examination Rules and Regulations

The University Examination Policy offers a wider and in-depth position of the University as far as examinations are concerned. It is advisable to refer to the Examination Policy document. This is available in the University website.

Below are some of the rules and regulations on sit-in University Examinations.

- 1) Candidates should be seated in the examination room at least 30 minutes before the examination starts. No candidate shall be allowed into the examination room 30 minutes after the start of the examination.
- 2) Candidates must sign the Examination Attendance Register (Appendix C) and shall be required to produce the official University Identification Card or authenticated pass from the Examination Office.
- 3) No candidate shall be allowed to leave the examination room before 30 minutes have elapsed from the start of the examination.
- 4) All answer booklets used in the examination room shall be provided by the invigilators.
- 5) No unauthorized books, papers, printed or handwritten materials shall be brought into the examination room by the candidate.
- 6) No computerized and electronic devices, mobile phones and other devices with capabilities to store data shall be brought into

- the examination room by the candidate. Calculators shall, however, be allowed if authorized by the Chief Examiner.
- 7) When candidates discover that an incorrect examination question paper has been distributed, they must return the same to the invigilator immediately. The correct paper shall be sourced from the Examination Office and administered while the incorrect paper shall be considered leakage and shall be handled as stipulated in Section 2.4 of this Policy.
 - 8) Candidates shall not leave the examination room with any answer booklet. All rough work shall be written at the back of the answer booklet and labelled as such.
 - 9) No communication whatsoever shall be allowed between candidates. In case of any problem, invigilators should be notified by a show of hand by the candidate.
 - 10) Walking out of an examination in protest disqualifies a student from the examination and shall be treated as an examination irregularity.
 - 11) Causing a commotion for whatever reason when an examination is in progress shall constitute an examination irregularity.
 - 12) Disorderly conduct or disturbance in or near the examination room by candidates or their allies shall be treated as an examination irregularity.
 - 13) All answer booklets shall be submitted to the invigilator by the candidate before the candidate leaves the examination room. Under no circumstances shall an answer booklet be accepted if it has been taken outside the examination room by a candidate. Such cases shall be treated as examination irregularities.
 - 14) No candidate shall be allowed to leave the examination room 30 minutes to the end of the examination. Candidates shall remain orderly and seated as the invigilators collect the answer booklets.
 - 15) Any other Act that the University, from time to time, shall declare.

Examination Offence and Penalty

Where rule are broken some penalties have been set aside to punish those committing the offence

	OFFENCE	PENALTY
1.	Possession of and/or copying from unauthorized material brought to the examination venue by the candidate or by other persons.	<ul style="list-style-type: none"> i) Suspension from the University for one academic year and on re-admission the candidate to retake the unit whose examination results were cancelled. ii) A written warning.
2.	Copying from other candidates' examination work in the examination room.	<ul style="list-style-type: none"> i) Suspension from the University for one academic year and on re-admission the candidate to retake the unit whose examination results were cancelled. ii) A written warning.
3.	Circulating/exchanging/issuing unauthorized written, electronic or any other material to other candidates during an examination.	<ul style="list-style-type: none"> i) Expulsion from the University.
4.	Communicating orally or through gestures with other candidates during the examination.	<ul style="list-style-type: none"> i) The candidate shall be deemed to have failed the unit. ii) A written warning.
5.	Possession of electronic gadgets such as mobile phone, MP3/MP4 player, ipod, Bluetooth facility, programmable calculator or any other such an unauthorized equipment/gadget in the examination venue.	<ul style="list-style-type: none"> i) The candidate shall be deemed to have failed the unit. ii) A written warning.
6.	Use of a mobile phone, MP3/MP4 player, iPod, Bluetooth facility, programmable calculator or any other such an unauthorized equipment/gadget in the examination venue.	<ul style="list-style-type: none"> i) Suspension from the University for one academic year and on re-admission the candidate to retake the unit whose examination results were cancelled. ii) A written warning.
7.	Possession of used or unused examination answer booklets in the examination venue during an examination other than the material issued by the invigilator.	<ul style="list-style-type: none"> i) Cancellation of the candidate's examination results in the unit concerned. ii) Expulsion from the University.

8.	Continuing writing even after the invigilator has announced the expiry of the time allocated for the examination.	<ul style="list-style-type: none"> i) Cancellation of the candidate's examination results in the unit concerned. ii) The candidate shall be deemed to have failed the unit. iii) A written warning.
9.	Carrying one's booklet out of the examination room.	<ul style="list-style-type: none"> i) Suspension from the University for one academic year and on re-admission the candidate to retake the unit whose examination results were cancelled. ii) A written warning.
10.	Carrying another candidate's answer booklet(s) out of the examination room.	<ul style="list-style-type: none"> i) Cancellation of the candidate's examination results in the unit concerned. ii) Expulsion from the University.
11.	Candidate whose answer booklet has been taken out of the examination room without his /her knowledge or consent.	<ul style="list-style-type: none"> i) Cancellation of the candidate's examination results in the unit concerned. ii) Re-sit the unit as a special examination if absolved from any complicity or conspiracy.
12.	Destroying evidence which may be used as proof of an examination irregularity.	<ul style="list-style-type: none"> i) Cancellation of the examination results for candidate(s) involved. ii) Expulsion from the University.
13.	Obstructing the invigilator while he/ she is performing his/her duties and/ or use of personal violence and/or threats against the invigilator on matters relating to the sitting of an examination.	<ul style="list-style-type: none"> i) Cancellation of the examination results for candidate(s) involved. ii) Expulsion from the University.
14.	Willful disruption of examinations attributable to a candidate's behaviour during University examinations.	<ul style="list-style-type: none"> i) Cancellation of the examination results for candidate(s) involved. ii) Expulsion from the University.

15.	Presenting oneself in the examination venue under the influence of alcohol and/or drug abuse.	<ul style="list-style-type: none"> i) Expulsion from the examination room. ii) Mandatory counseling and/or medical treatment until declared fit to resume studies. iii) Re-sit the examination as supplementary examination when next offered. iv) A written warning.
16.	Smoking in the examination room.	<ul style="list-style-type: none"> i) Expulsion from the examination room. ii) Cancellation of the examination results for candidate(s) involved. iii) Re-sit the examination as supplementary examination when next offered. iv) A written warning.
17.	Conspiracy to impersonate other candidate(s) during an examination.	<ul style="list-style-type: none"> i) Cancellation of the examination results in the unit concerned. ii) Expulsion from the University.
18.	Possession and/or use of another candidate's Examination Card.	<ul style="list-style-type: none"> i) Cancellation of the examination results in the unit concerned. ii) Suspension from the University for one academic year and on re-admission the candidate to retake the unit whose examination results were cancelled. iii) A written warning.
19.	Availing one's Examination Card for use by another candidate.	<ul style="list-style-type: none"> i) Cancellation of the candidate's examination results in the unit concerned. ii) Suspension from the University for one academic year and on re-admission the candidate to retake the unit whose examination results were cancelled. iii) A written warning/nullify the unit registered.
20.	Presenting an invalid Examination Card to the invigilator during an examination.	<ul style="list-style-type: none"> i) Cancellation of the candidate's examination results in the unit concerned. ii) The candidate shall be deemed to have failed the unit. iii) A written warning.

21.	Possession of a forged Examination Card.	<ul style="list-style-type: none"> i) Cancellation of the examination results in the unit concerned. ii) Expulsion from the University.
22.	Presenting oneself for an examination in a unit one has not duly registered for.	<ul style="list-style-type: none"> i) Cancellation of the candidate's examination results in the unit concerned. ii) A written warning.
23	Sitting examination without payment of requisite fee.	<ul style="list-style-type: none"> i) Cancellation of the candidate's examination results in the unit concerned. ii) A written warning.
24.	Plagiarism/unacknowledged sources/ copying in a thesis and or Academic reports	<ul style="list-style-type: none"> i) Withdrawal of Certification/ Awards. ii) Expulsion from the University for the candidate (continuing student) or withdrawal of Award (graduate).
25.	Proven commission of examination offence(s) more than once.	<ul style="list-style-type: none"> i) Expulsion from the University.

Examination Regulations for Programmes in Health Sciences

The Nursing and Public health programme has an additional set of rules and regulations governing its examinations

- H1. The Bachelor of Science in Nursing and Public Health Degree Programme shall be completed when a registered student has taken and passed all the prescribed 62 Courses as well as four University common Courses. The Programme is spread over eight teaching semesters of 13 weeks each and four clinical placements of 16 weeks each.
- H2. The PU Examination Regulations shall apply.
- H3. The overall assessment of the

student's performance in each unit shall be done at the end of every semester. Assessment shall comprise of CATs and a written final examination. In some Courses, oral and practical examinations shall be administered as part of CATs.

- H4. The written final examination shall have the following:
 - i) Multiple choice Questions (MCQs): 20 questions of one mark each, totaling to 20 marks
 - ii) Short Answer Questions (SAQs): Eight questions of five marks each, totaling to 40 marks
 - iii) Essay Questions: Two questions of 20 marks

each, totaling to 40 marks
H5. Each theory unit shall be assessed out of 100%, the marks being distributed as follows:

- i) The written examination: 70%
- ii) Take away assignment: 10%
- iii) Sit-in CAT: 20%

H6. A supplementary examination shall be marked out of 100% and the maximum score awarded shall be 50%.

H7. To sit for a University examination, a candidate MUST have attended 95% of the prescribed class work.

H8. All clinical rotations are compulsory for candidates to meet the minimum University and Professional Regulatory Board requirements.

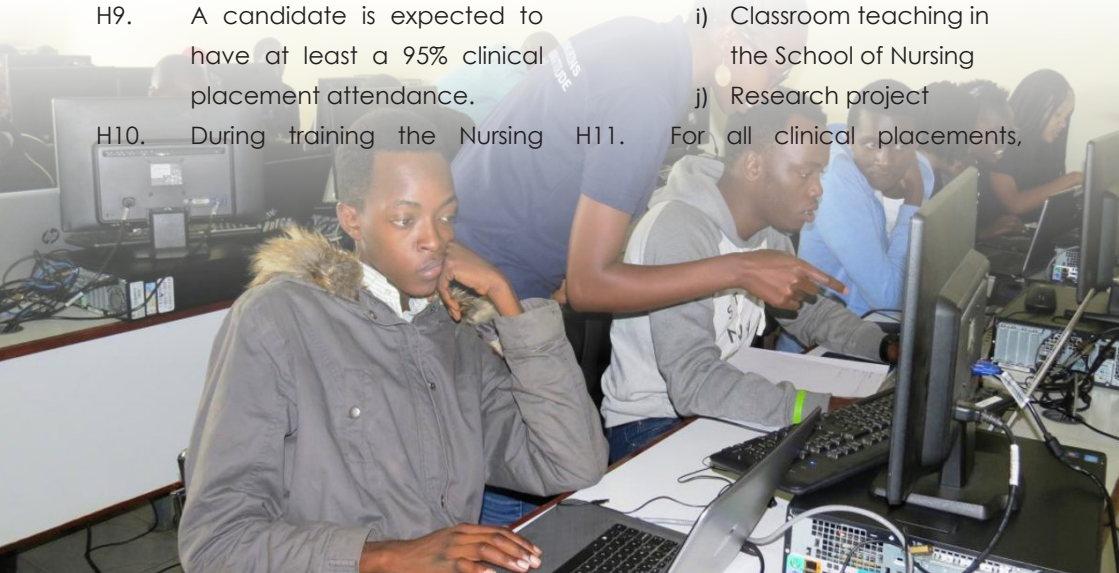
H9. A candidate is expected to have at least a 95% clinical placement attendance.

H10. During training the Nursing

students shall be assessed in the practical areas listed below: These practical examinations shall be marked out of 100%, with a pass mark of 65%

- a) Total nursing care of a patient (Medical/Surgical/Pediatrics')
- b) Total psychiatric care of a mentally ill patient
- c) Labour and delivery
- d) Baby at risk
- e) Administration of BCG (Bacillus Calmette-Guérin)-TB vaccine
- f) Management of Maternal Child Health/ Family Planning (MCH/ FP) Clinic
- g) Ward/unit management
- h) Clinical teaching
- i) Classroom teaching in the School of Nursing
- j) Research project

H11. For all clinical placements,



clinical follow up, clinical teaching and continuous assessment will be carried out.

H12. The key competencies to be achieved by the students during the training are stipulated in the student's Log Book.

H14. The letter grades for the marks scored per unit shall be indicated as follows in the Academic transcript

Letter Grade	Marks Scored (%)	Remarks
A	75 and above	Distinction
B	65 to 74	Credit
C	50 to 64	Pass
F	49 and below	Fail

Incomplete Examination

All Courses offered in the Programme are a pre-requisite to proceed to the next academic year. A candidate must pass all the prescribed Courses before proceeding to the next academic year. Examination will be incomplete without the CAT marks.

Examination Failure

- i) A candidate who fails more than half the Courses taken in any one semester shall receive an Academic Warning (AW) from the Dean of the School on approval by the PUS.

- ii) A candidate who fails half the Courses prescribed in an academic year shall be allowed to take supplementary examinations in the failed Courses before proceeding to the next academic year.
- iii) A candidate who fails more than half the Courses prescribed in an academic year, or fails in ANY supplementary examination, shall repeat the whole year and register for ALL the Courses offered at that level.
- iv) A candidate who fails all the Courses in any one semester, or fails ANY unit after repeating the year, shall be discontinued.
- v) Special examinations will be arranged for students who fail to sit for examinations during the normal examination season for reasons acceptable to the SBE.
- vi) Appeal against discontinuation shall be addressed to the Chair of the PUS.
- vii) Classification. Degrees in Health Sciences shall not be classified.

To compliment academic work (assignments, knowledge search and/or general information, the University has made efforts to avail computers with internet connections to students. From this fact, students can work on their assignments, browse or do research on-

line. At the moment Computers for students use can be accessed at the Computer Lab 1 and lab 2. There are guidelines and instructions on the use of such computers and the internet posted in the various rooms with computers. This is vital for PU students due to the increasing demand for knowledge in computers and IT, in the job market

Avoid any malicious acts and/or insecure practices while using such facilities. When using computers

and the internet service students are advised to observe respect and integrity of other users, privacy, data protection and confidentiality particularly on social media. As such, use of computers in the university to access pornography sites, infringe intellectual property rights, malign others, defame or propagate hate speech is not acceptable. Disciplinary action will be taken against those who default.

10 Computer, ICT and Internet Use

For more information on the computer and internet use, please contact or visit the ICT department of Pwani University located at the Old Administration Block or contact them through email: ict@pu.ac.ke

All Pwani University, students are issued with a PU email address and a password after they are registered. Please remember to change the password immediately you open your account for the first time. This email will enable you to access information ranging from personal information (results, fee status, timetable, university calendar etc) to other public announcements or notices.

Students email address shall appear in the following format:-

surname.firstname@school.pu.ac.ke and password shall be their full admission number e.g. E35S/0685/2010 All students are encouraged to use these facilities in a responsible way.

Pwani University Students Association (PUSA) 11

PUSA is the governing body of students at Pwani University through which students organize their activities and express their views and opinions in the university. It is the mouth piece of the student community. It is led by student leaders elected by the students themselves. The elections are held every year in the beginning of the second semester, normally before 15th March as per the PUSA 2010 Constitution and Election guidelines of 2020.

Funding of PUSA is largely from the

contribution of PU students. Each student pays a specified subscription fee each semester. To propagate good financial management practices, PUSA funds are subjected to audit every financial year. Students through their leadership are encouraged to ensure there is prudent utilization of their funds.

The Student Council of PUSA consists of the following: -

The Chairperson

Overall head, presides over meetings,



represents PUSA at University Council and in the student disciplinary committee. He/she performs other duties as stipulated by the PUSA Constitution.

The Vice Chairperson

Facilitates community service and related projects. Deals with students' welfare issues

Secretary General

Spokesperson of PUSA. Will communicate resolutions of congress to students and relay other necessary information.

Gender and Social Welfare Secretary

Deals with gender issues and represents students in the Bursary and welfare committees. Handles issues of students who require special attention. Works with the DOS to improve the welfare of students with various disabilities

Academic Secretary

Deals with Academic issues pertaining to students. Plays an important role in organizing career activities on campus. Represents students in the academic board.

Sports and Entertainment Secretary

Deals with organizing activities of students sports and entertainment. He/she works closely with various sports captains, club and societies leaders to organize/regulate activities.

Financial Secretary

Handles PUSA finances. Develops the PUSA budget and finances its implementation school.

For more information on PUSA visit the PUSA offices next to our Students Common Room.

Security 12

A hired security firm and the University security supervision team provide security within the campus. The security personnel are assigned duties in specific demarcated locations within the university compound. In addition, the University has installed closed circuit television (CCTV) to boost security for students.

However, this is not adequate to keep you safe. Please be alert always about your safety. As a community it is a good idea we adopt the strategy of "Being your neighbors keeper". That way we can enjoy our safety in the University. This is achieved by reporting all cases that appear to pose a risk to our security to the relevant authorities in the university.

Security off- campus

Kilifi is a relatively calm place with very few incidences of insecurity. The local authority has installed security lights on the main streets. The regular and administrative police make patrols in the night to curb cases of crime. Avoid staying too late into the night.

Residents of Kilifi also have a community organized patrol arrangement. They have a vehicle with its sides inscribed "AMINI KILIFI". In case of a problem you can call their emergency number 0705

555 400 and talk to the case manager

University Security Offices

Report all cases that need to be handled legally at the security offices situated in the new administration block Room No.485 top floor. University has its own security officers who supervise the hired security service.

Report any signs or behavior that can lead to insecurity to the nearest security office. The University will provide more information on security measures on campus from time to time

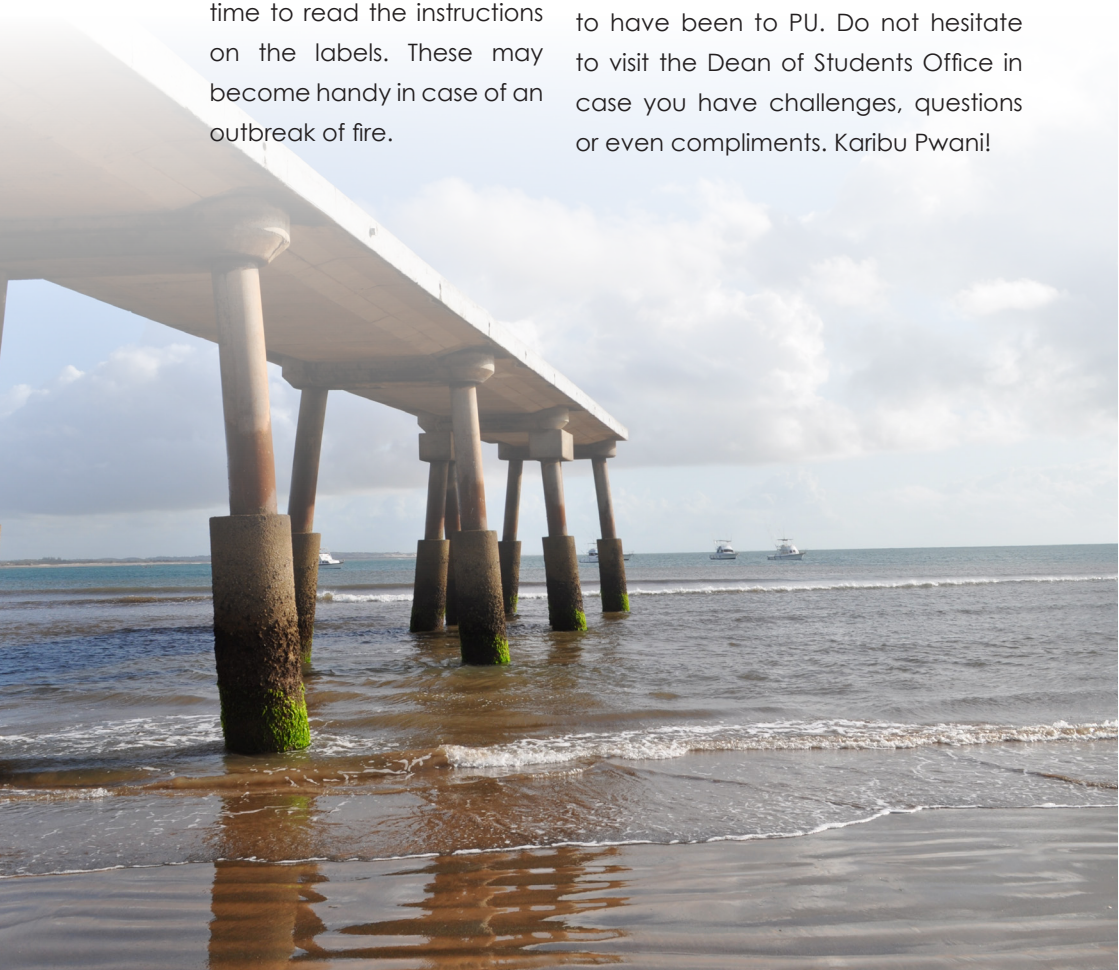
To enhance security:

- i) Keep an eye on your belongings while in the buildings. Report suspicious and criminal activity to the university security
- ii) Lock and secure your room door when leaving. Avoid the habit of leaving keys at the top door beam.
- iii) Do not leave valuables or money out in the open in your room or office.
- iv) In case of a fire breakout:
- v) Please sound an alarm by calling other students, hostel staff and the security personnel near you.

- vi) You should exit the site immediately but calmly through the designated exit routes.
- vii) Forget what you have left behind and save your life.
- viii) Move to the nearest fire assembly point.
- ix) Please remember that all hostels have fire fighting appliances located in strategic positions. Take time to read the instructions on the labels. These may become handy in case of an outbreak of fire.

Note: We normally have fire talks with the students on how to stop the fire and prevent it from spreading by using different fire appliances (extinguishers). The fire wardens who are in the university give these talks. We can avoid fire disasters here at Pwani University when you and me stay away from it!

All students are encouraged try and to make Pwani a conducive place to live and study. This way we shall be proud to have been to PU. Do not hesitate to visit the Dean of Students Office in case you have challenges, questions or even compliments. Karibu Pwani!



IMPORTANT CONTACTS:

GENERAL ENQUIRIES	COMPLAINTS CAN BE DIRECTED TO
<p>Dean of Students Office; Room 12, Old Administration Bldg. Mobile: 0717 686 741 Email: dean-sa@pu.ac.ke Accommodation Office (next to Hostel 5)</p> <p>ACCOMMODATION OFFICERS MR. HUMPHREY MWAJOHA - 0726 280 082</p> <p>HOUSE KEEPER ANDERSON MVOI - 0720 642 295</p> <p>JANITORS DAISY KIRETI - 0712 561 784 NZAI KOMBE - 0723 642 781 Email: accommodation@pu.ac.ke</p> <p>COVID -19 Response Hotline number 0790 148 814 or 0770 593 807</p>	<p>COMMISSION ON ADMINISTRATIVE JUSTICE "Office of The Ombudsman" Head office: 2nd floor, west end towers, opposite Aga khan High school off waiyaki way - westlands, P.o. Box 20414-00200, Nairobi.</p> <p>Tel: +254-20-2270000 2303000 2603765 2441211 8030666</p> <p>Toll Free Line : 0800 221 349</p> <p>SMS Short Code: 15700 (safaricom subscribers only)</p> <p>email: info@ombudsman.go.ke (for general inquiries) : complain@ombudsman.go.ke (for complaints)</p> <p>THE COMPLAINTS OFFICER Pwani University P.O Box 195, Kilifi. Email: complaints@ pwaniuniversity.ac.ke Tel: 0772-200-400 Office No. 444 New Administration Block</p>

UNIVERSITY ADDRESS

Pwani University
P.O Box 195-80108, Kilifi, Kenya.
Tel; 0786 727 899 | **Email:** info@pu.ac.ke

Website: www.pu.ac.ke

THE INTEGRITY ANTHEM TUANGAMIZE UFISADI

Kenya yangu, naipenda
Nachukia ufisadi
Waharibu nchi yetu
Tuangamize ufisadi

Ndugu yangu mwananchi
Tudumishe maadili
Tufanyapo kazi zetu
Tuangamize ufisadi

Kenya yangu ngao yangu
Naupinga ufisadi
Hongo mbali, rushwa mbali
Tuangamize ufisadi

Tuna nia, na sababu
Na uwezo, nazo mbinu
Tuungane sisi sote
Tuangamize ufisadi

NATIONAL ANTHEM

SWAHILI

*Ee Mungu nguvu yetu
Ilete baraka kwetu
Haki iwe ngao na mlinzi
Natukae na undugu
Amani na uhuru
Raha tupate na ustawi.*

*Amkeni ndugu zetu
Tufanye sote bidii
Nasi tujitoe kwa nguvu
Nchi yetu ya Kenya
Tunayoipenda
Tuwe tayari kuilinda*

*Natujenge taifa letu
Ee, ndio wajibu wetu
Kenya istahili heshima
Tuungane mikono
Pamoja kazini
Kila siku tuwe na shukrani*

English

*Oh God of all creation
Bless this our land and nation
Justice be our shield and defender
May we dwell in unity
Peace and liberty
Plenty be found within our borders.*

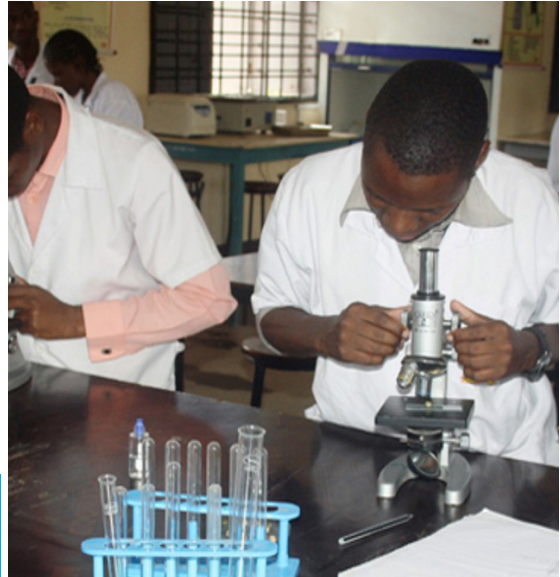
*Let one and all arise
With hearts both strong and true
Service be our earnest endeavour
And our homeland of Kenya
Heritage of splendour
Firm may we stand to defend*

*Let all with one accord
In common bond united
Build this our nation together
And the glory of Kenya
The fruit of our labor
Fill every heart with thanksgiving.*



Kilifi







© 2020

Pwani University,
P. o. Box 195-80108,
Kilifi, Kenya

Tel: +254 41 7525 101/3/4/6/7

Fax: +254 41 7522 128

email: info@pu.ac.ke

website: www.pu.ac.ke

